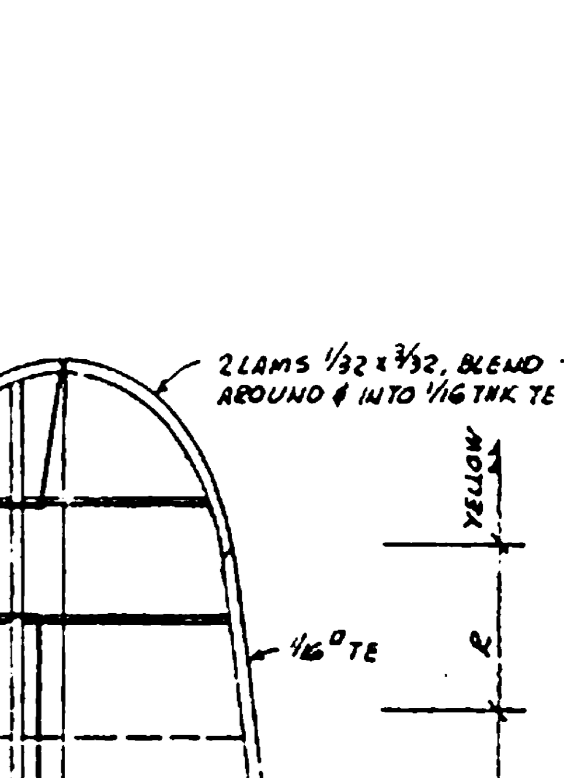
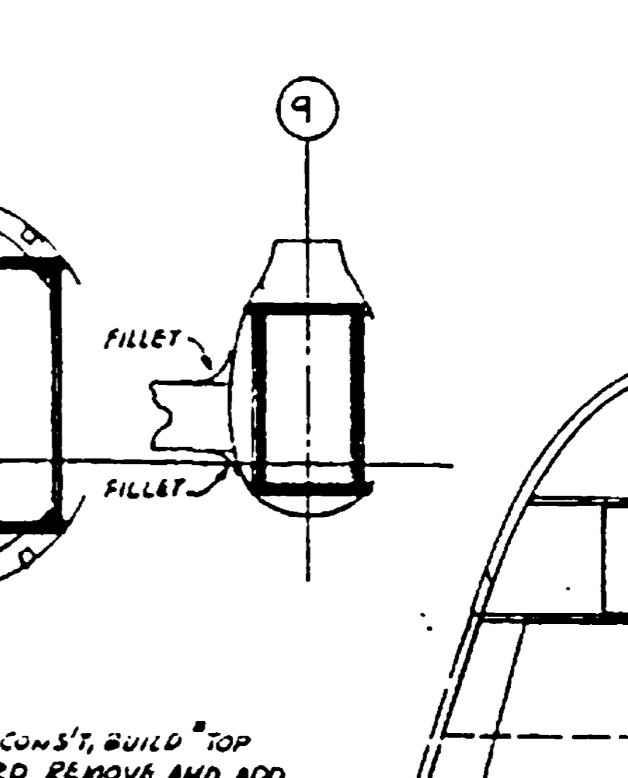
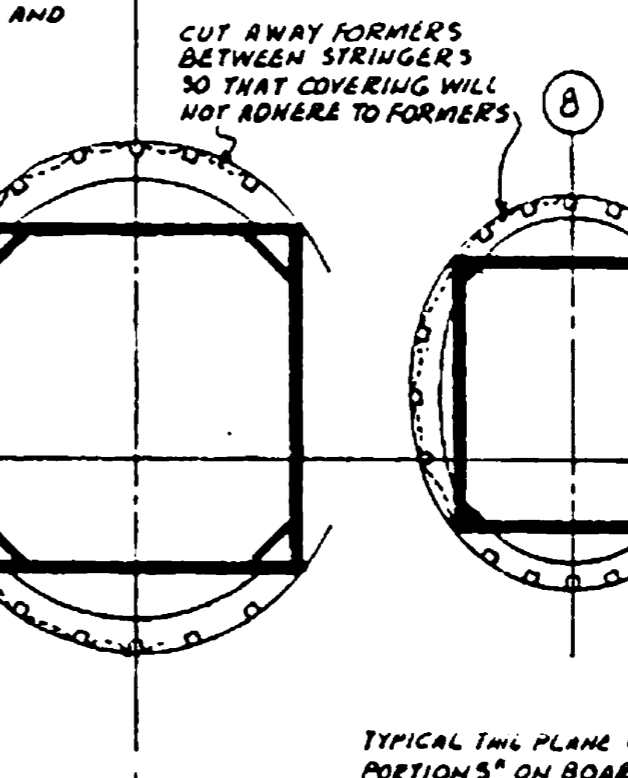
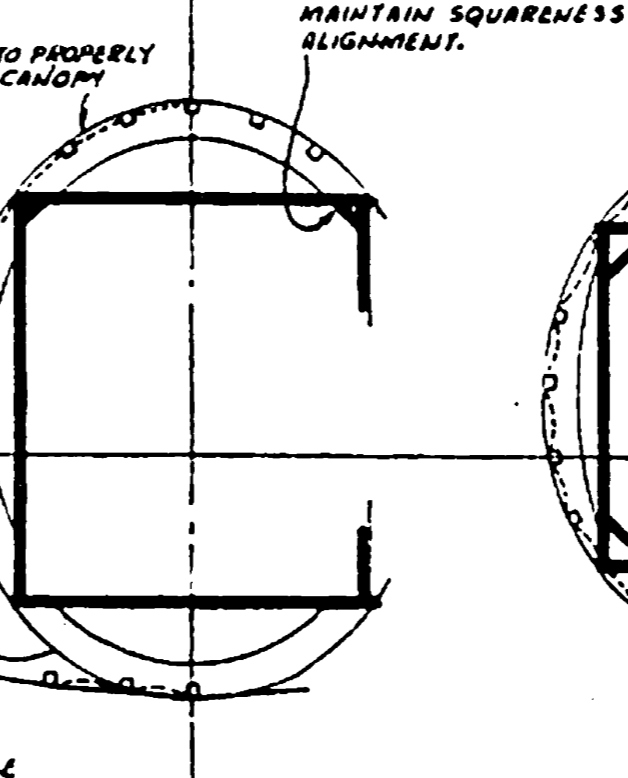
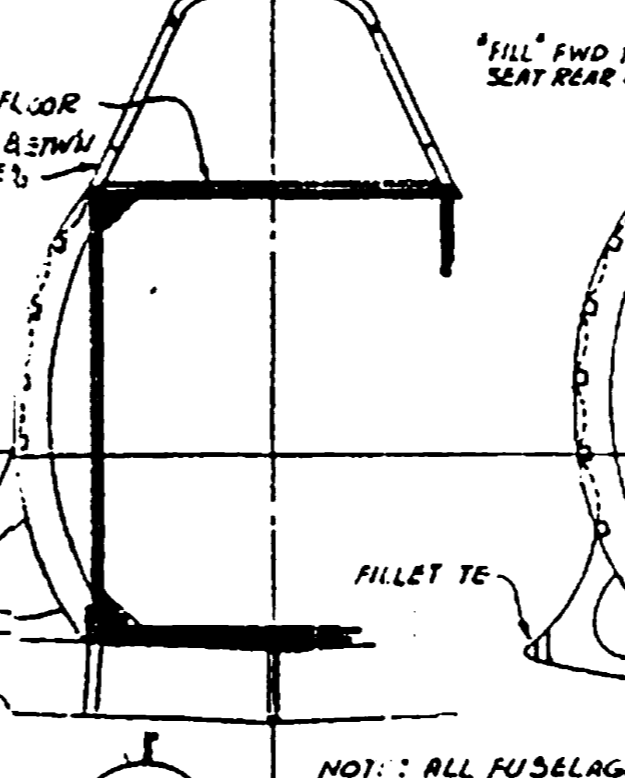
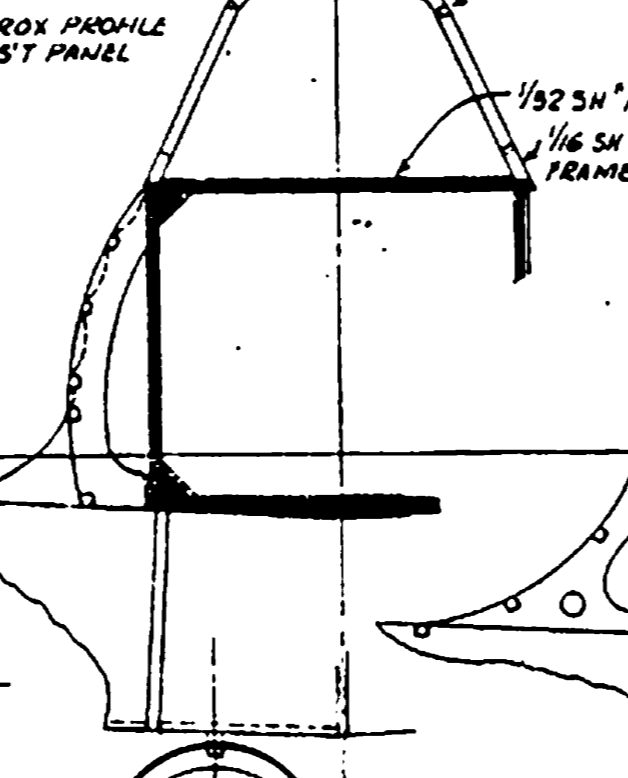
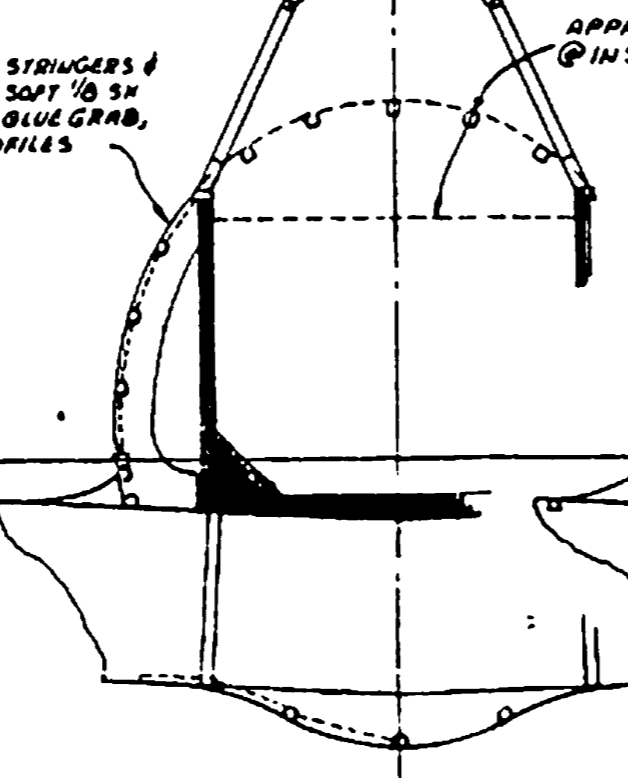
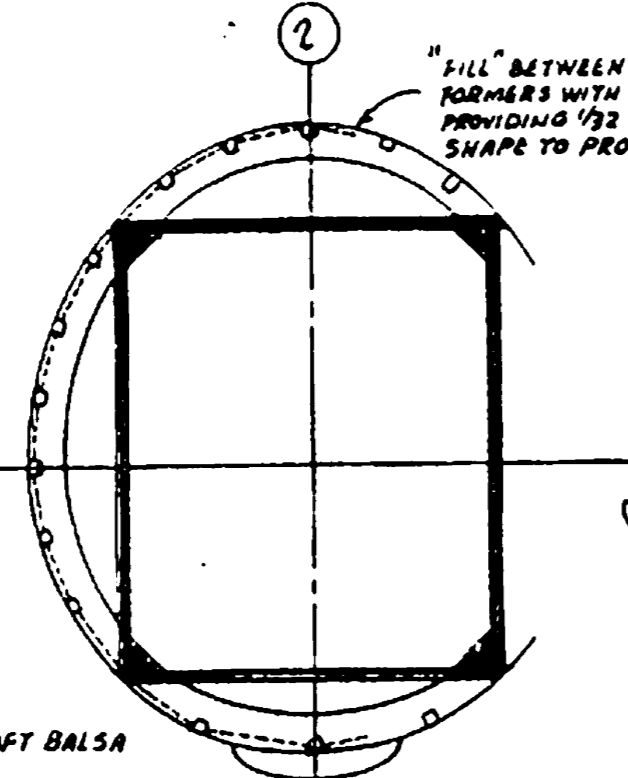
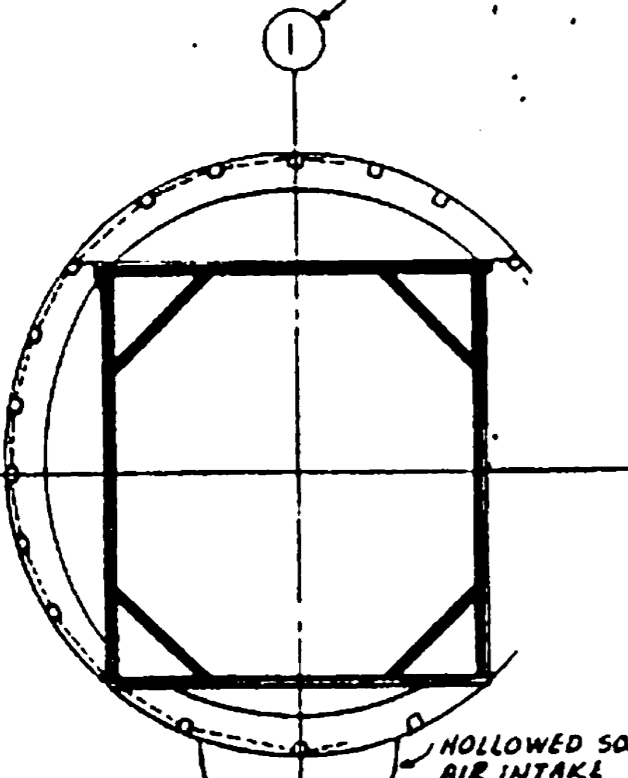
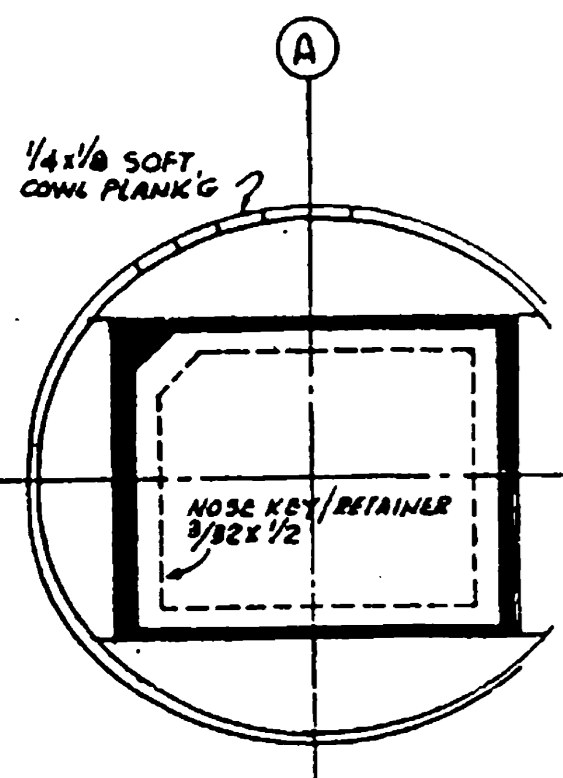


STA 1 CONSISTS OF DOUBLED FORMERS: FWD 1/16 SH CUT APPROX 1/16 LESS THAN PROFILE SHOWN TO RECEIVE COWL PLANKING & 3/16 SH AFT FOR RADIUS FRONT EDGE



1/4" x 1/8" SOFT COWL PLANKING

HOLLOWED SOFT BALSA AIR INTAKE

"FILL" BETWEEN STRINGERS & FORMERS WITH SOFT 1/8 SH PROVIDING 1/32 BLUE GRAB, SHAPE TO PROFILES

APPROX PROFILE @ INST PANEL

2 LAMS 1/32 x 1/8 OR CUT FROM BASS

1/32 SH FLOOR 1/16 SH BETWEEN FORMERS

"FILL" FWD TO PROPERLY SEAT REAR CANOPY

AFTER ENSURING THAT FRAMEWORK IS SQUARE, ADD IN THE CORNER GUSSETS TO HELP MAINTAIN SQUARENESS AND ALIGNMENT.

CUT AWAY FORMERS BETWEEN STRINGERS SO THAT COVERING WILL NOT ADHERE TO FORMERS

FILLET TE

NOTE: ALL FUSELAGE STATIONS ARE SYMMETRICAL ABOUT VERTICAL C-

TYPICAL TAIL PLANE CONST, BUILD TOP PORTIONS ON BOARD, REMOVE AND ADD BOTTOM PORTION MEMBERS, TURN CAREFULLY SHAPE TO SYMMETRICAL AIRFOILS & PROFILES.

"FILL" PER NOTE ABOVE

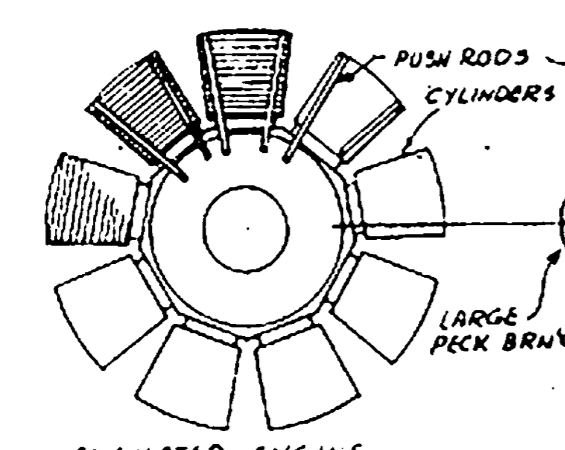
REMOVABLE TO WIND MOTOR

1/8 PLANKING COWL

FILLET TC & RIB 1 F

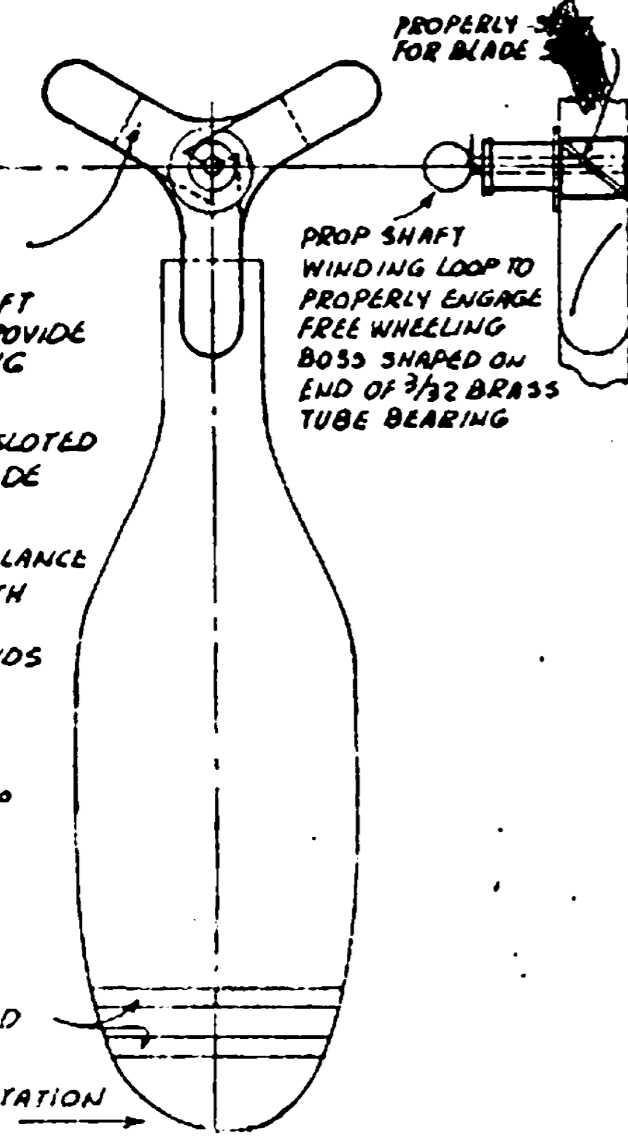
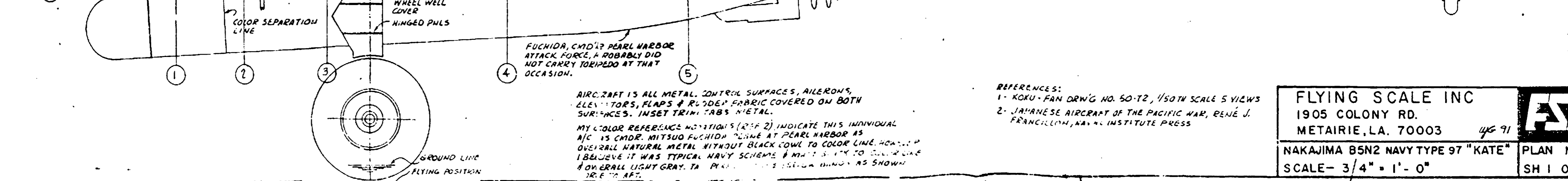
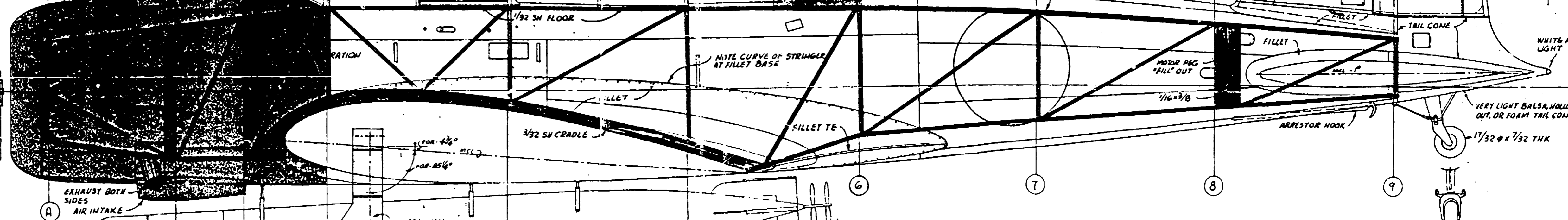
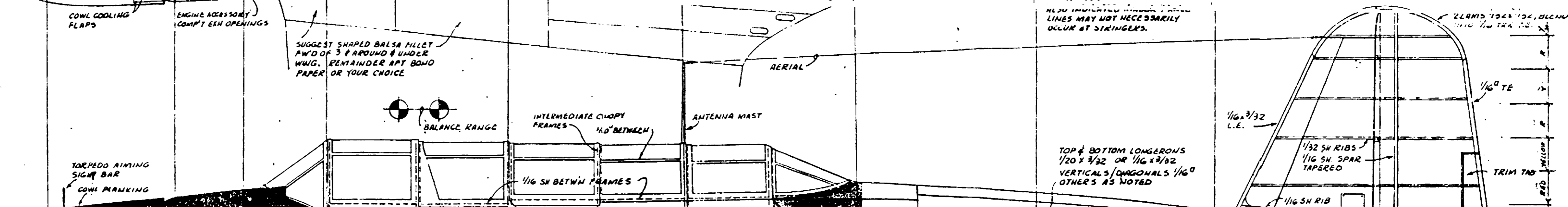
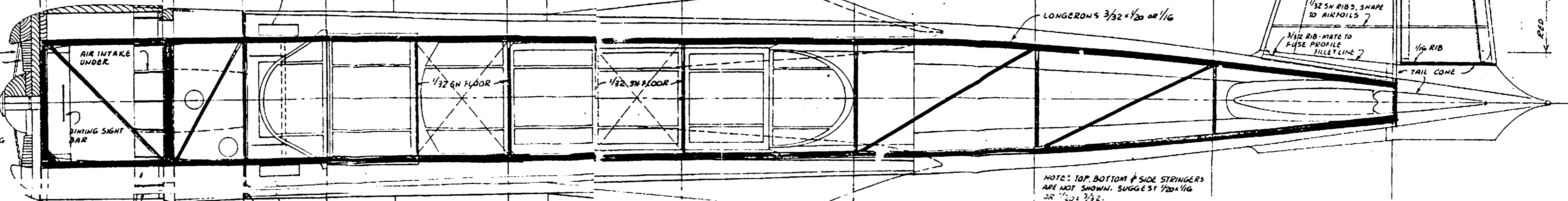
FILLET TE

LONGERONS 3/32 x 1/20 OR 1/16



SIMULATED ENGINE ACTUAL ENGINE WAS 1 CM WITH TOW SAKAE II CYLINDERS BLACK GEAR BOX GRAY/SH ALUM PUSH RODS DULL BLACK (NOT FLAT) COXES - SPACE BETWEEN CYLS & INSIDE COWL MEDIUM DARK GRAY FOR CONTRAST

SUGGESTED MOTOR FOR AIR FRAME WT (LESS MOTOR) OF 3 TO 4 OZ: START WITH 20 TO 24" OF 1/4" FLAT FORMED INTO 4 LOOPS (8 STRANDS) 30" TO 36" LONG & PRETENSION TO MOTOR LENGTH OF 18 TO 20" (TO PROPERLY OPERATE I.G. RELEASE WHEN UNWOUND). WHEN PROPERLY LUBED & BROKEN IN, SHOULD ACCOMMODATE 850 (30") TO 1050 (36") WINDS.



PROPERLY FOR BLADE

PROP SHAFT WINDING LOOP TO PROPERLY ENGAGE FREE WHEELING BOSS SHAPED ON END OF 3/32 BRASS TUBE BEARING

BUILD UP THE HUB FROM 3/16 WOOD, JOINED TO PROVIDE FOR 3 BLADES, WITH 3/32 BRASS SHAFT FIRMLY ADHERED & CENTERED. PROVIDE FRONT & REAR 1/32 PLY REINFORCING DISCS. ACCURATELY EPOXY BLADES INTO SLOTTED HUBS ENSURING UNIFORM BLADE PITCH ANGLE & TRACKING. BLEND IN HUB/BLADE JOINT, BALANCE & PAINT ASSEMBLY SILVER WITH REAR SIDES OF BLADES LIGHT BRONZE COLOR & TWO RED BANDS AROUND BOTH FACES. CUT THREE (3) IDENTICAL BLADES FROM PLASTIC BOTTLE WITH TIP TILTED LEFT OF VERTICAL 15 TO 18°

RED ROTATION

SUGGEST SHAPED BALSA FILLET FWD OF 3" & AROUND & UNDER WING. REMAINDER APT BOND PAPER OR YOUR CHOICE

NOTE: TOP, BOTTOM & SIDE STRINGERS ARE NOT SHOWN. SUGGEST 1/20 x 1/16 OR 1/20 x 3/32. HELIX INDICATED MINOR TRAIL LINES MAY NOT NECESSARILY OCCUR AT STRINGERS.

TOP & BOTTOM LONGERONS 1/20 x 3/32 OR 1/16 x 3/32 VERTICALS/DIAGONALS 1/16 OTHERS AS NOTED

FUCHIDA, CMDR PEARL HARBOR ATTACK FORCE, & ROBBARDY DID NOT CARRY TORPEDO AT THAT OCCASION.

AIRCRAFT IS ALL METAL. CONTROL SURFACES, ALERONS, ELEVATORS, FLAPS & RUDDER FABRIC COVERED ON BOTH SURFACES. INSET TRIM TABS METAL. MY COLOR REFERENCE NOTATIONS (R/F 2) INDICATE THIS INDIVIDUAL A/C IS CMDR. MITSUO FUCHIDA "DOME" AT PEARL HARBOR. AS OVERALL NATURAL METAL WITHOUT BLACK COWL TO COLOR LINE, HOWEVER I BELIEVE IT WAS TYPICAL NAVY SCHEME & MUST TRY TO COLOR LINE & OVERALL LIGHT GRAY. TA... AS SHOWN

REFERENCES: 1- KOKU-FAN DRWG NO. 50-T2, 1/50TH SCALE 5 VIEWS 2- JAPANESE AIRCRAFT OF THE PACIFIC WAR, RENÉ J. FRANCILLON, NAVAL INSTITUTE PRESS

FLYING SCALE INC
1905 COLONY RD.
METAIRIE, LA. 70003
NAKAJIMA B5N2 NAVY TYPE 97 "KATE" PLAN N-7
SCALE - 3/4" = 1' - 0" SH 1 OF 2